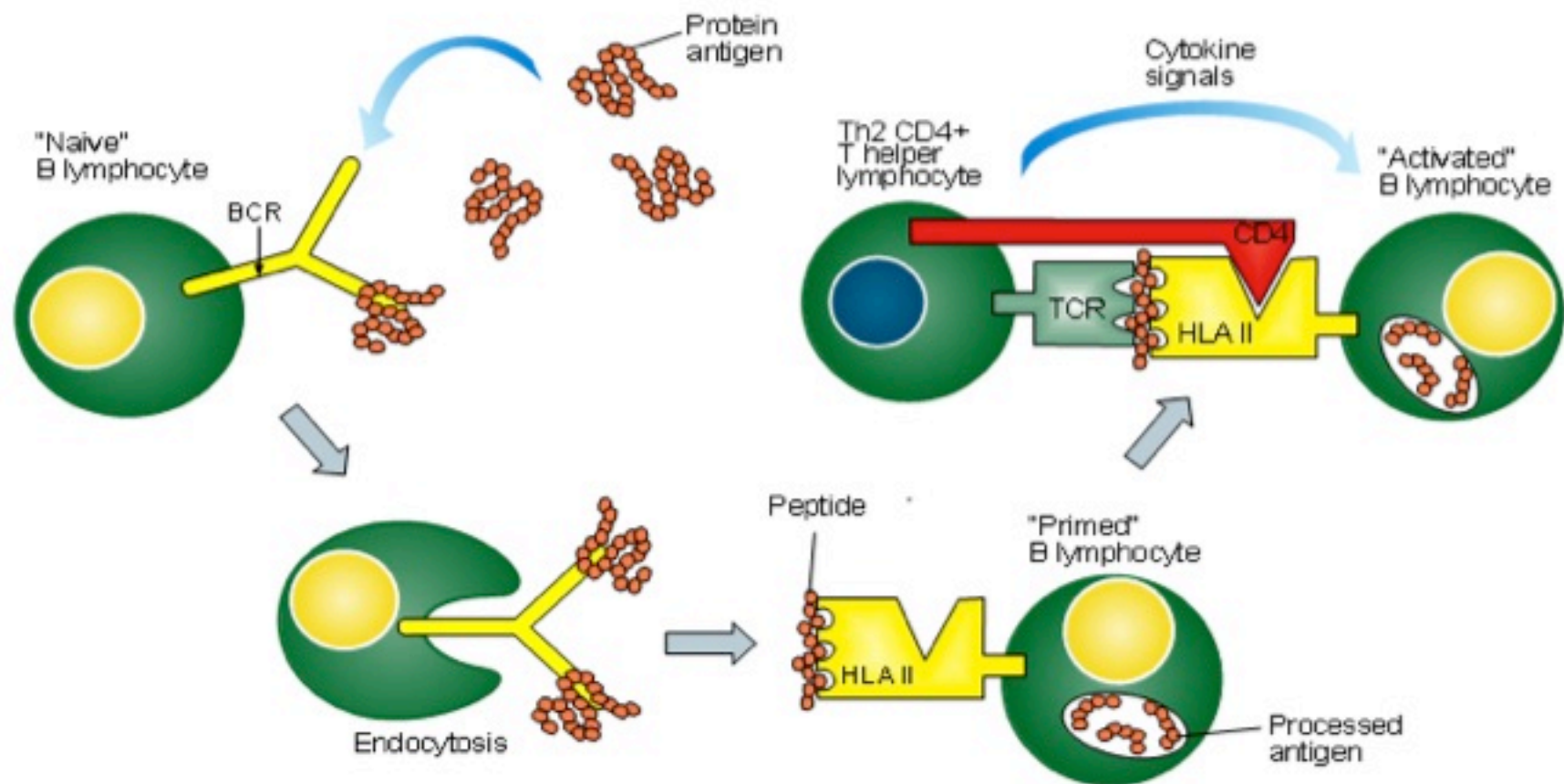
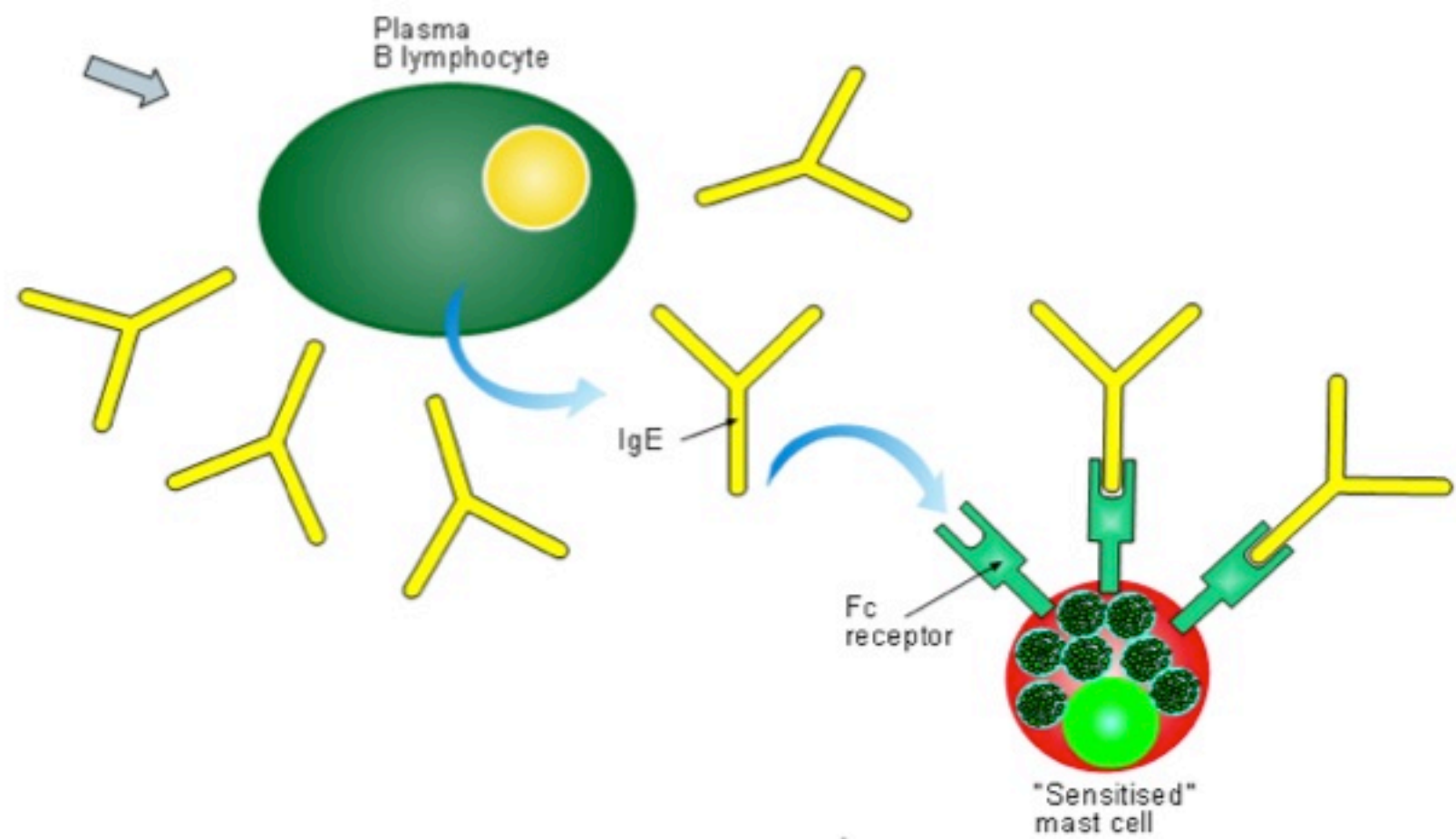


# Type 1 - Immediate (or atopic, or anaphylactic)

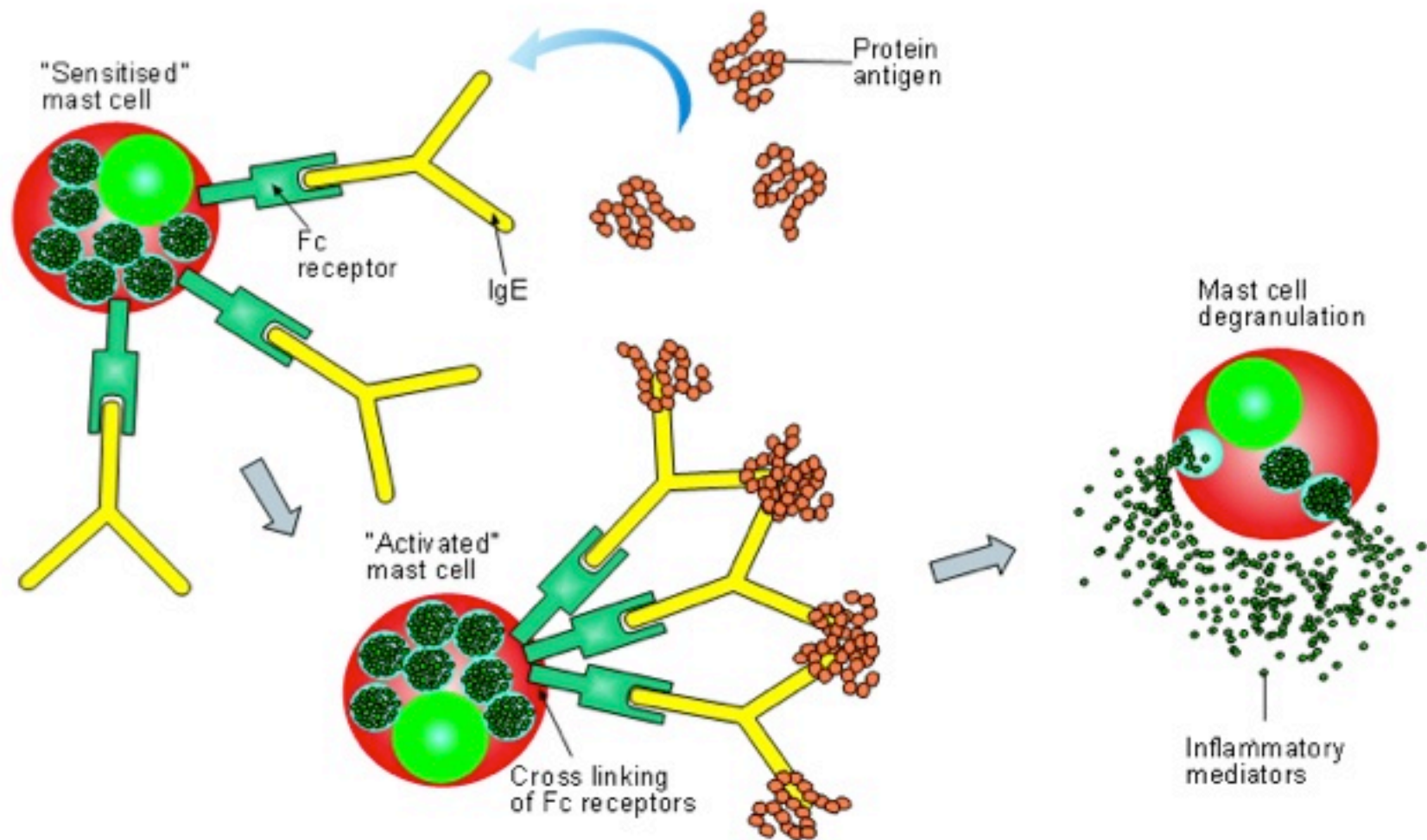
Figure 1a: Primary exposure



**Figure 1b: Primary exposure**

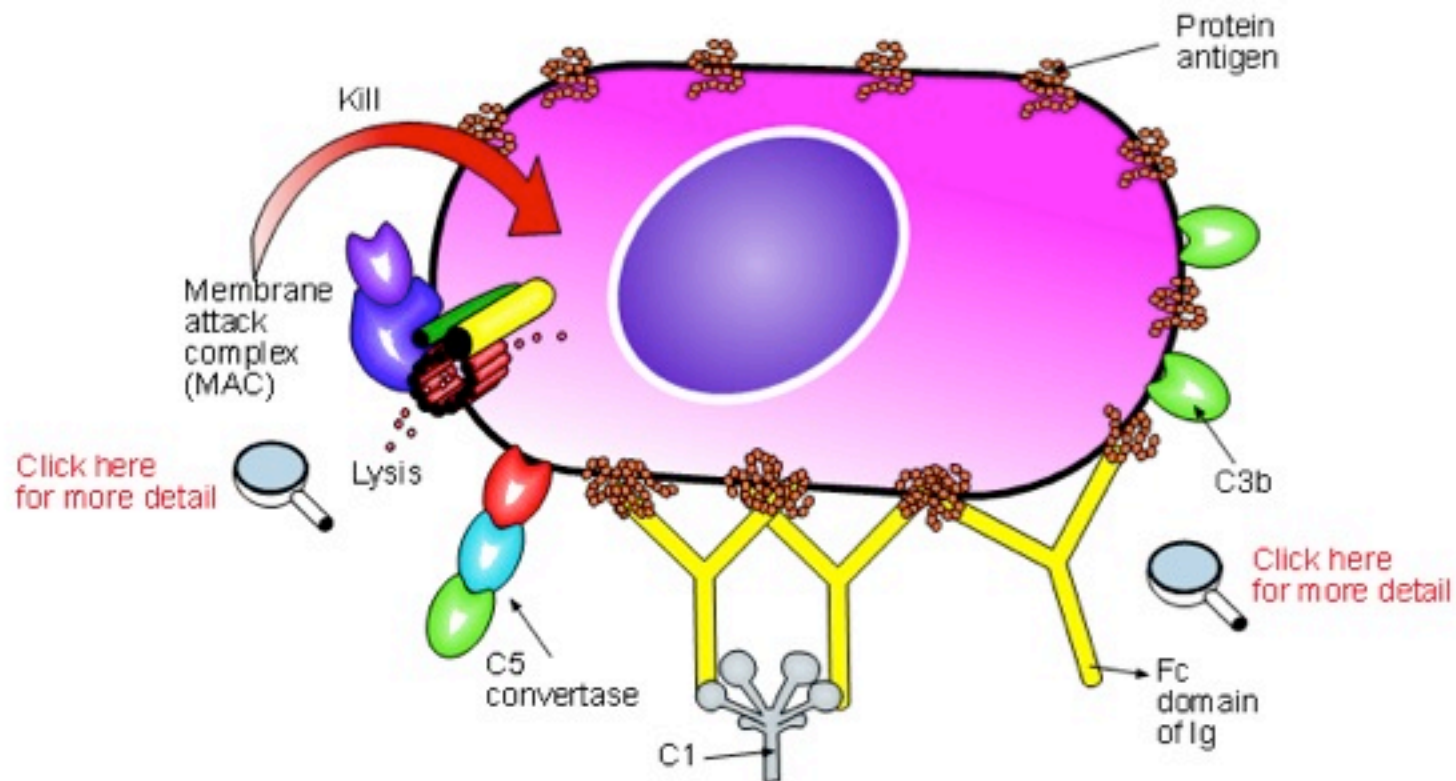


**Figure 1c: Re-exposure**

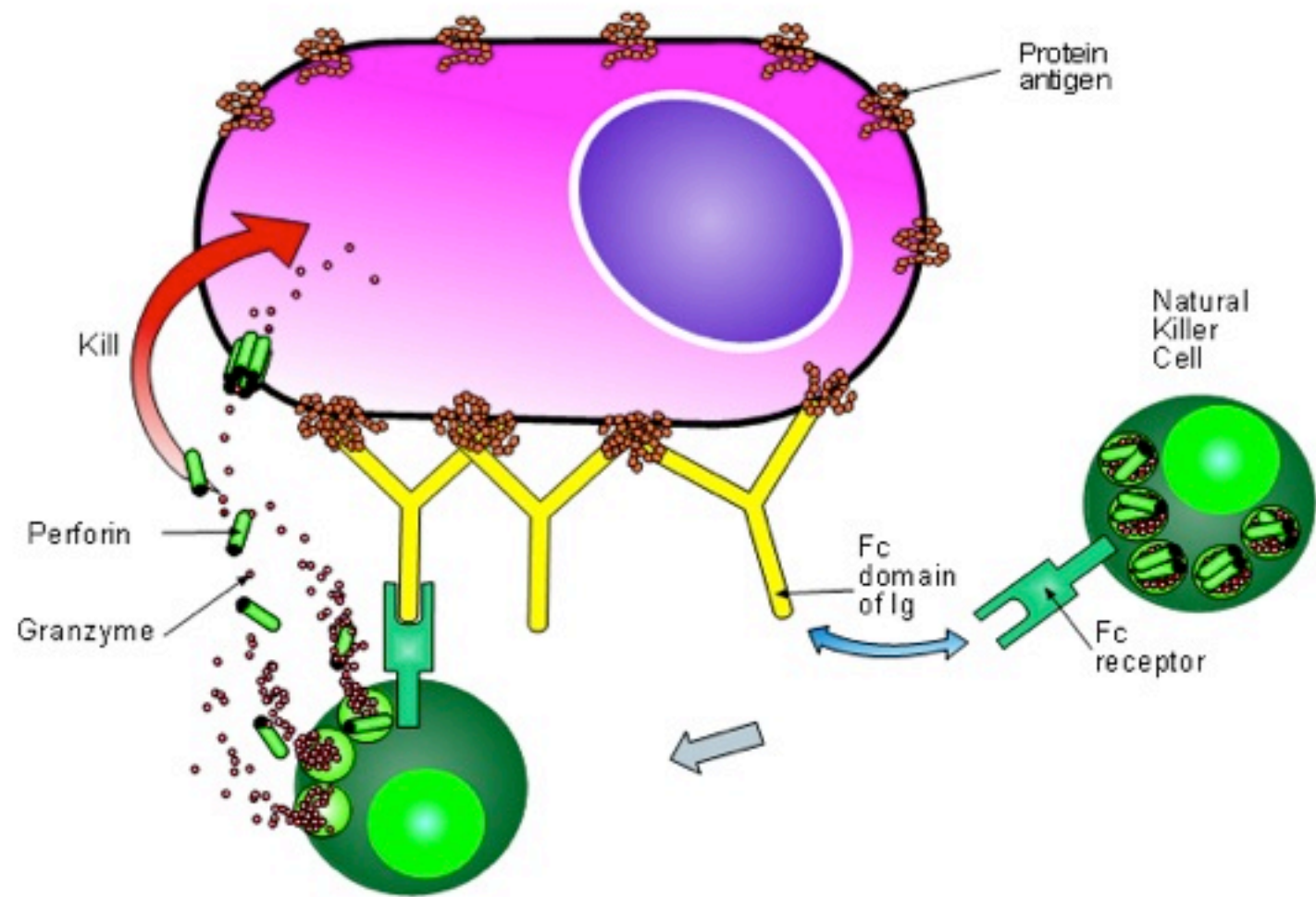


## Type 2 - antibody-dependent cytotoxicity

Figure 2a: Classical complement pathway



**Figure 2b: Antibody dependent cell cytotoxicity (ADCC)**



## Type 3 - immune complex hypersensitivity

Figure 3a

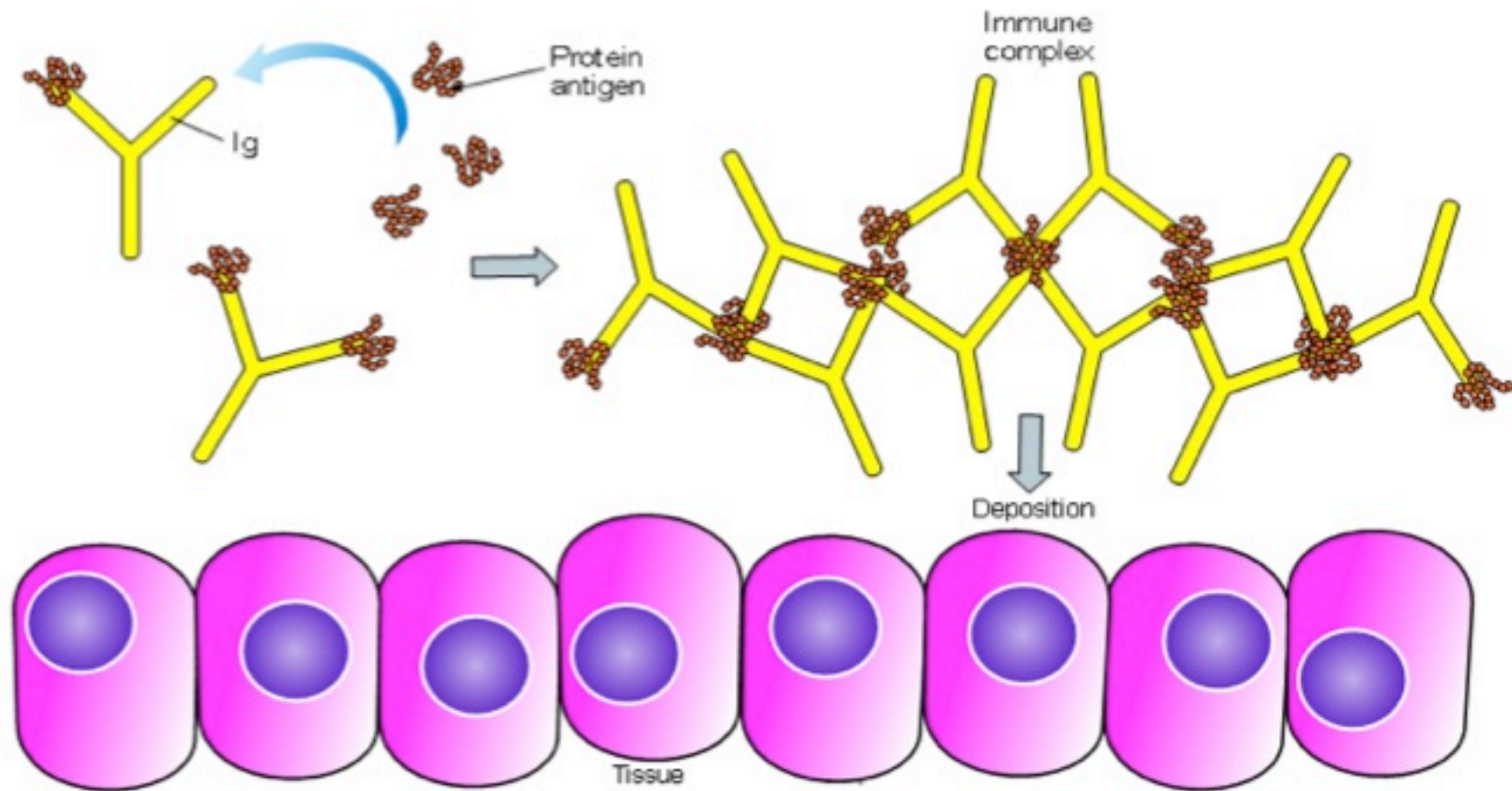
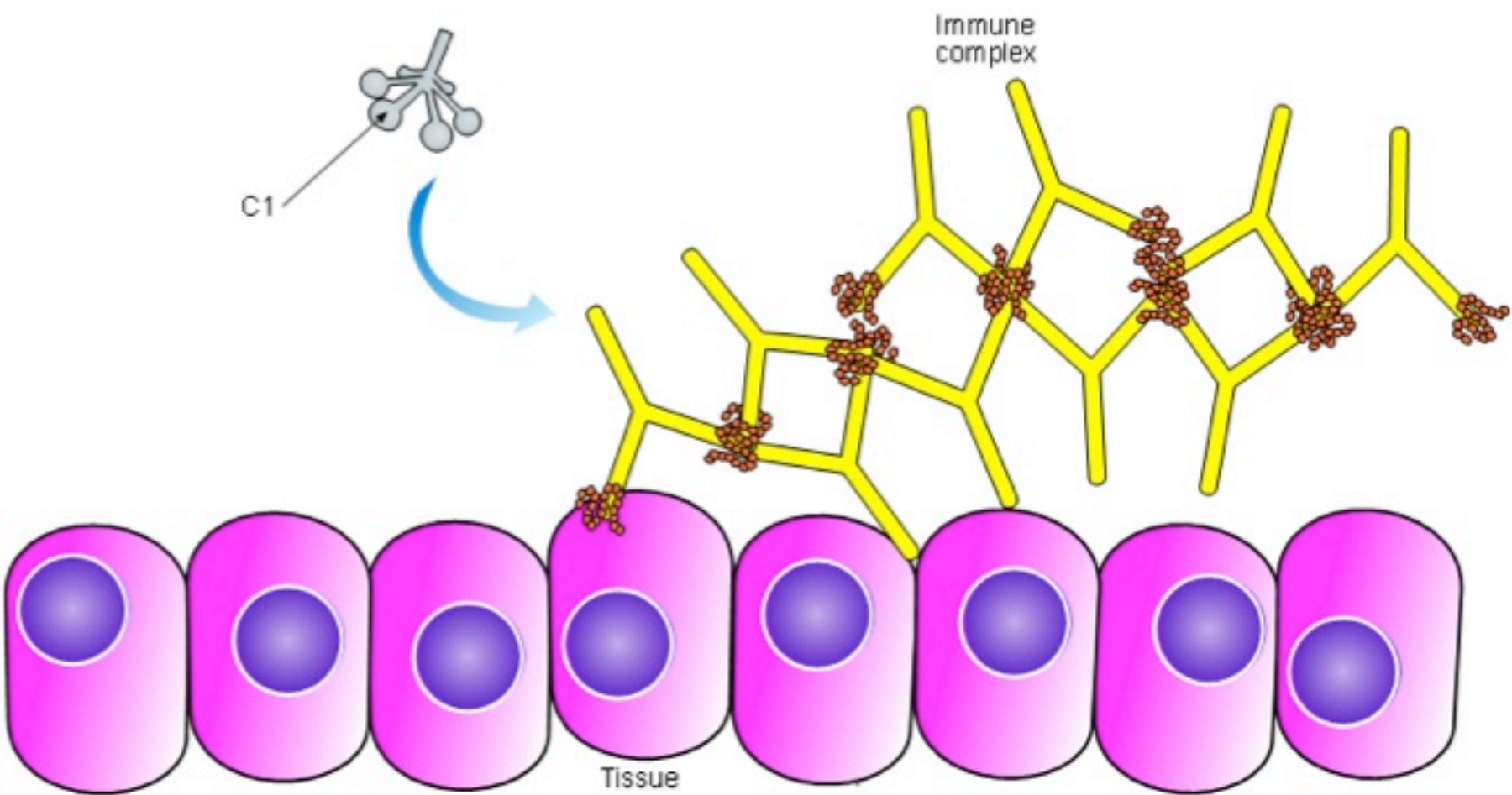
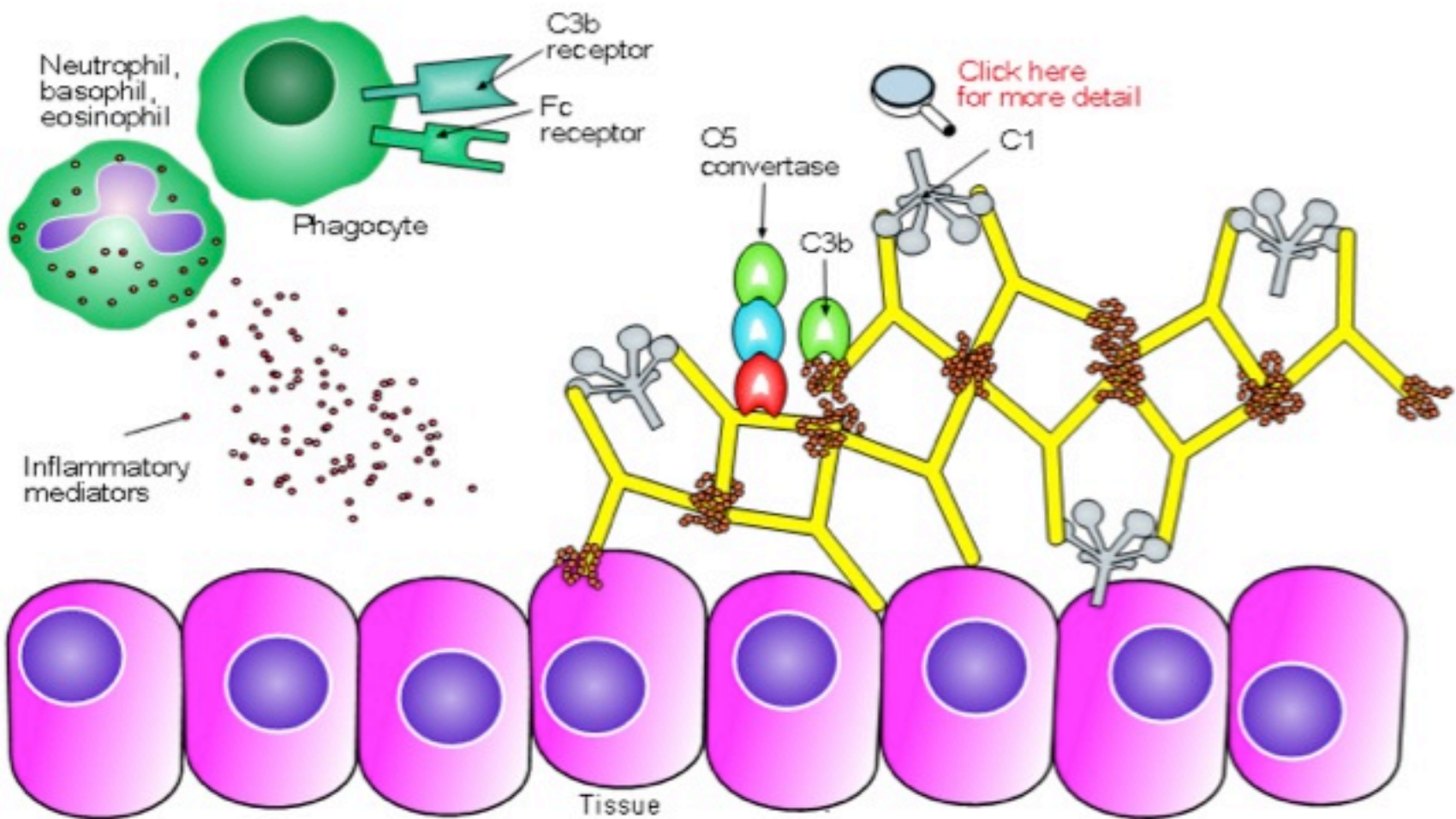


Figure 3b



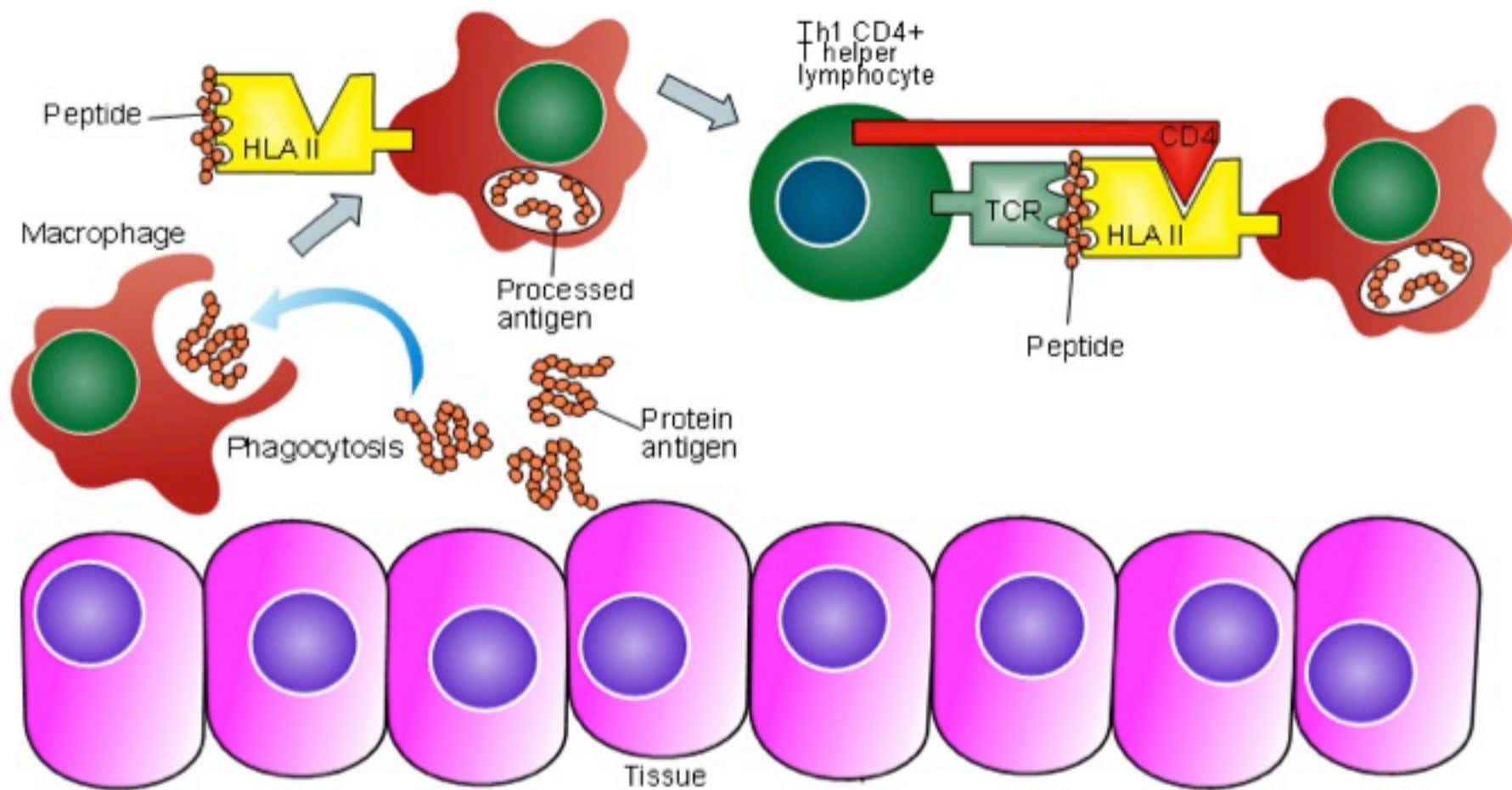
**Figure 3c**





# Type 4 - cell-mediated (Delayed-Type Hypersensitivity, DTH)

Figure 4a: Primary exposure



**Figure 4b: Re-exposure**

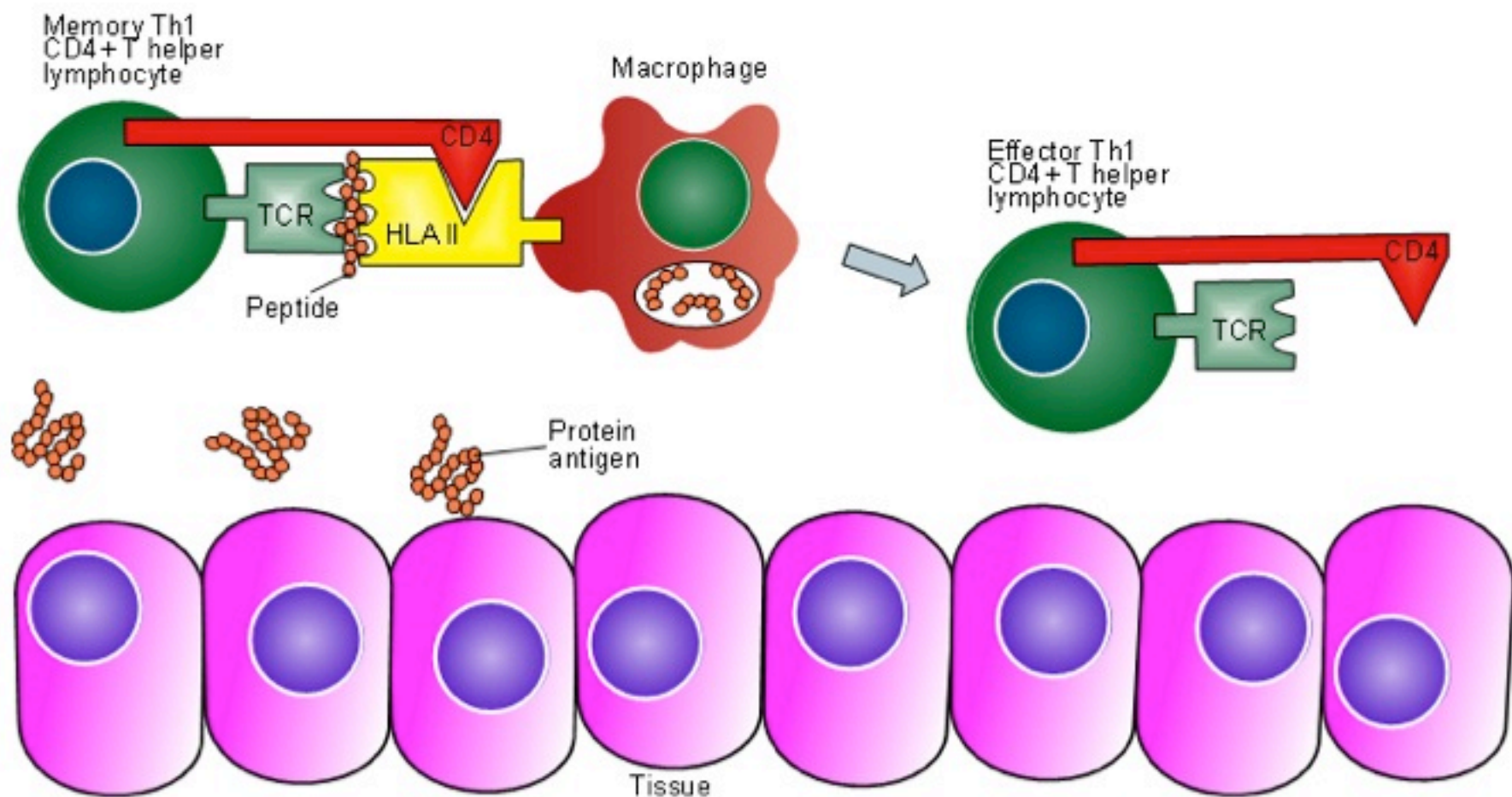


Figure 4c

