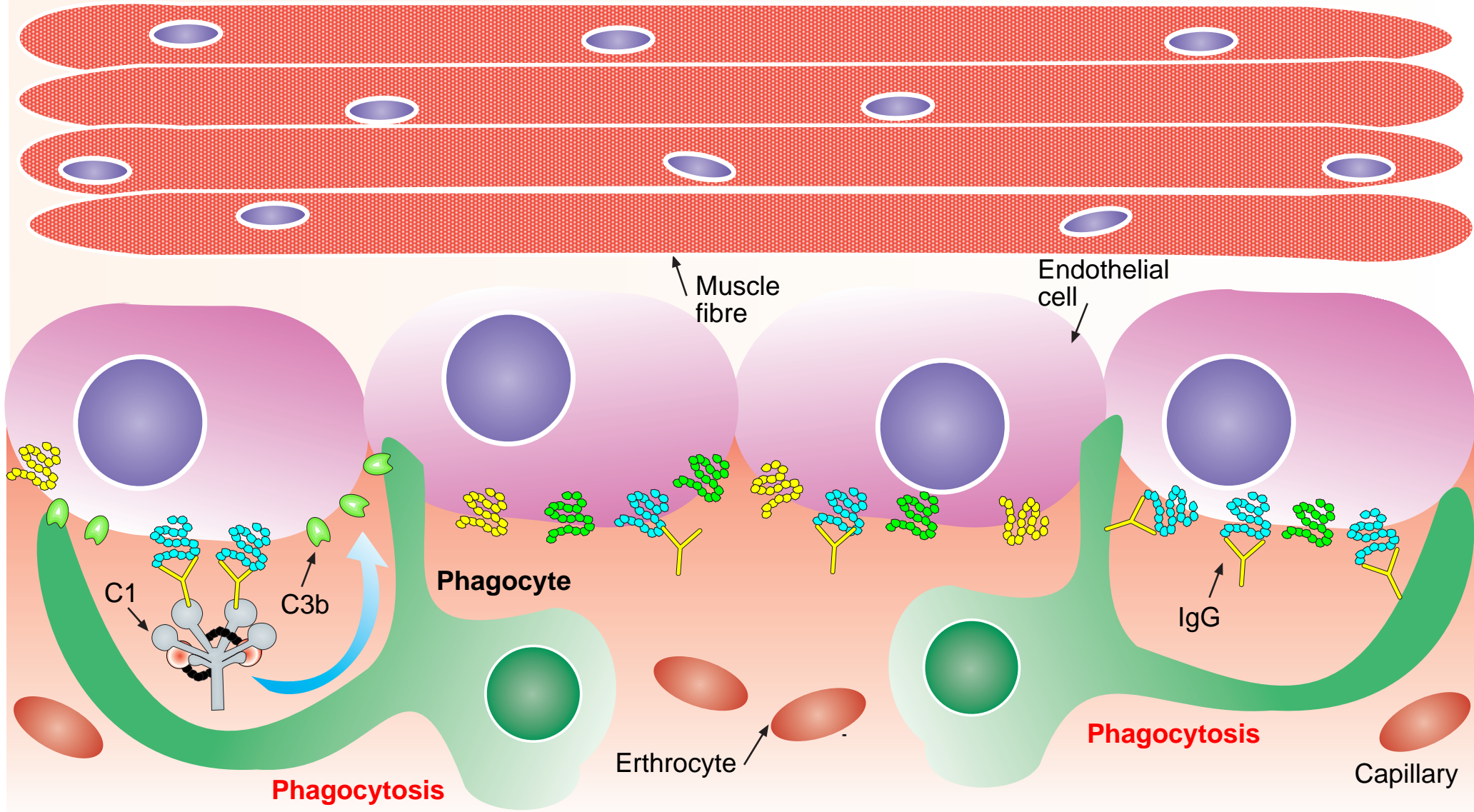


### ③ Receptor-mediated phagocytosis



Receptor-mediated phagocytosis of capillary endothelial cells can be triggered by surface bound IgG or complement C3b proteins leading to destruction of these cells in muscle and skin. Phagocytes such as neutrophils, macrophages and dendritic cells express Fc receptors and complement receptors that bind IgG and C3b, respectively. These receptors detect IgG and C3b opsonised cells and antigens and engulf them more efficiently. Macrophages and dendritic cells are also involved in antigen-presentation of self-peptides to autoreactive CD4<sup>+</sup> helper T lymphocytes.

