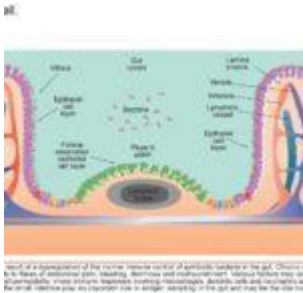


A case of persistent bloody diarrhoea



- [Patient presentation](#)
- [History](#)
- [Differential Diagnosis](#)
- [Examination](#)
- [Investigations](#)
- [Special investigations](#)
- [Discussion](#)
- [Final Outcome](#)
- [References](#)
- [MCQs](#)

Patient presentation

Patient is a 22 year old female who presented to the surgery department of a tertiary level hospital having been referred from a private clinic, with a two month history of severe abdominal cramps, persistent bloody and mucoid diarrhoea, weight loss and tiredness.

Acknowledgement

This case study was kindly provided by Dr Monica Mercer from Immunopaedia

History

2 months ago:

Symptoms began with abdominal cramps and an intense urge to pass stool after every meal. Her symptoms rapidly worsened with passage of stool becoming more frequent. Within two days she was passing persistently watery diarrhoea mixed with fresh blood and mucous. She was seen by her general practitioner who treated her for gastritis.

One week later she collapsed at home and was admitted to hospital for investigations. She was discharged two days later without a diagnosis.

1 month ago:

Symptoms persisted and she experienced diarrhoea and vomiting after eating or drinking, which lasted for 10 days. She was admitted to hospital for rehydration and further investigations. No conclusive diagnosis was made.

Currently:

Patient is passing 10-20 liquid stools per day. Diarrhoea is mucoid and bloody. Occurs day and night. Patient complains of malaise, lethargy and anorexia. She has lost 8 kg in the past 2 months.

No past surgical history

No significant medical history

Family history:

Mother – type 2 Diabetes Mellitus

No other family members with chronic disease

No known allergies

Differential Diagnosis

- Infection:

1. Cryptosporidium,
2. Shigella,
3. salmonella,
4. E.coli,
5. Campylobacter,
6. Clostridium difficile
7. If HIV positive consider- MAC, Isospora belli, cryptosporidium, TB

- Functional bowel syndromes e.g. irritable bowel syndrome (IBS)
- Malabsorption
- Coeliac disease
- Inflammatory bowel disease (IBD)

Examination

Thin ill looking young woman, conscious and alert, in obvious discomfort.

Vitals:

Heart rate:	80bpm
Respiratory rate:	18 bpm
Blood pressure:	120/70
Temperature:	37°C

Pale mucous membranes

Abdominal examination:

Guarding and tenderness noted in the left iliac fossa and hypogastrium.

Investigations

No results available from previous admissions. All results are from current admission.

FBC:		
WCC	5.9 x 10 ⁹ /l	(4.00 – 10.00)
Hb	9.0 g/dl	(12.1 – 15.1 g/dl)
Platelets	748 x 10 ⁹ /l	(150 – 400)
CRP	17.4 mmol/l	(0 – 10 mmol/l)
Urea and Electrolytes:		
Na	137 mmol/l	(135 – 147 mmol/l)
K	3.5 mmol/l	(3.3 – 5.0 mmol/l)
Cl	96 mmol/l	(99 – 113 mmol/l)
Co2	31 mmol/l	(18 – 29 mmol/l)
Urea	3.3 mmol/l	(2.5 – 7.0 mmol/l)
Creat	32 umol/l	(60 – 12 umol/l)
Liver Function Test:		
Total Bili	7 umol/l	(3 – 18 umol/l)
Conjugated Bili	3 umol/l	(0 – 5 umol/l)
Total Protein	56 g/l	(60 – 80 g/l)
ALP	66 U/l	(30 – 120 U/l)
GGT	15 U/l	(5 – 35 U/l)
AST	23 U/l	(5 – 45 U/l)
ALT	18 U/l	(5 – 45 U/l)
Thyroid Function Test:		
Free T4	15.1 pmol/l	(10.3 – 21 pmol/l)
TSH	1.8 mIU/l	(0.35 – 4.50 mIU/l)
Calcium	2.23 mmol/l	(2.12 – 2.65 mmol/l)
Albumin	27 g/l	
Phosphate	0.9 mmol/l	(0.8 – 1.4 mmol/l)
HIV ELISA	Negative	
Urine MCS:		

FBC:		
Leucocytes	Trace	
Bacteria	Absent	
Stool MCS:		
Brown	Unformed	
PMN	+++	
Erythrocytes	++	
Parasites	Not observed	
Aerobic organisms	Not isolated	
C difficile toxin A	Negative	
C difficile toxin	Negative	

Special investigations

Abdominal X-ray:

No toxic megacolon

Gastroscopy Report:

Oesophagus and gastro- oesophageal junction were normal. Stomach mucosa was intact and normal. No gastritis, ulceration or blood was noted. Cardia was normal. Pylorus and duodenum normal.

Colonoscopy report:

Very friable mucosa. Extensive ulceration with pseudopolyps, involving the rectum, entire sigmoid and left colon up to the transverse colon. Multiple biopsies of the colonic tissue were taken for histological analysis.

Histological Findings:

Pathology is limited to the mucosa and submucosa. Intense infiltration of the mucosa and submucosa with neutrophils and crypt abscesses, lamina propria with lymphoid aggregates, plasma cells, mast cells and eosinophils, and shortening and

branching of the crypts.

Discussion

What is the Diagnosis?

Ulcerative Colitis, which is a chronic disease associated with diffuse mucosal inflammation of the colon, giving rise to significant morbidity and recurrent symptoms of intermittent bloody diarrhea, rectal urgency and tenesmus. Patients also present with fever, anemia, fatigue, weight loss, loss of appetite, loss of body fluids and nutrients, skin lesions, joint pain, and failure to grow. The latter is specifically seen in children. About half of the people diagnosed with ulcerative colitis have mild symptoms (Ulcerative colitis, no date). Onset of symptoms typically occurs between 15 and 40 years of age, with a second peak in incidence between 50 and 80 years of age.

Ulcerative colitis is closely related to another inflammatory intestinal condition called Crohn's disease, which can lead to chronic inflammation in any part of the gastrointestinal tract. Together, these two conditions are collectively referred to as inflammatory bowel disease, or IBD. (Ulcerative colitis, no date).

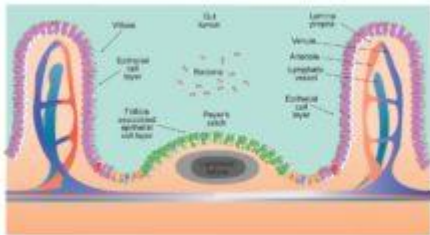
Men and women are equally likely to develop ulcerative colitis. Extraintestinal manifestations may occur in up to 25% of patients. These include osteoporosis in 15%, oral ulcerations in 10%, arthritis in 5% to 10%, primary sclerosing cholangitis in 3%, uveitis in 0.5% to 3%, pyoderma gangrenosum in 0.5% to 2.0%, deep venous thrombosis in 0.3% and pulmonary embolism in 0.2%. Current cigarette smoking is associated with a reduction in the risk for ulcerative colitis, but former smokers have a higher risk of developing ulcerative colitis vs never smokers. Although the exact cause of ulcerative colitis is still unknown, there is strong evidence that primary

dysregulation of the mucosal immune system causes an excessive immunologic response to normal microflora. Other contributing factors to ulcerative colitis are taken to be both genetic and environmental in nature (Richards, 2019).

What is the pathogenesis of ulcerative colitis?

Structure of the gut wall.

immunopaedia.org



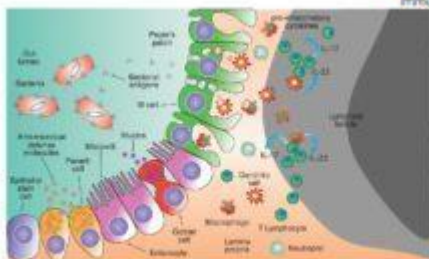
It is thought that ulcerative colitis is a result of a dysregulation of the normal immune control of symbiotic bacteria in the gut. Chronic inflammation of the gut leading to mucosal and submucosal tissue leads to tissue atrophy and loss of normal barrier function. Various factors may contribute to the breakdown of tolerance between self and non-self in the gut with susceptibility, genetic predisposition, immune dysregulation, and environmental factors.

The gastrointestinal innate and adaptive immune system continuously faces the challenge of potent stimuli from the commensal microflora and food. These local immune responses require a tight control, the

outcome of which is in most cases the induction of tolerance. Local T cell immunity is an important compartment of the specific intestinal immune system. T cell reactivity is programmed during the initial stage of its activation by professional presenting cells. Mucosal dendritic cells (DCs) play a key role in regulating immune responses in the antigen-rich gastrointestinal environment. Mucosal DCs are a heterogeneous population that can either initiate immune responses, or control intestinal inflammation and maintain tolerance. This breakdown of immune tolerance leads to the two major forms of inflammatory bowel disease, Crohn's disease and ulcerative colitis (See figures 1 & 2). With IBD, what we know very well is that there is a skewed presence of T-cells, with more Th1 cells and pro-inflammatory cytokines (Richards, 2019)

Antigen sampling in the gut.

immunopaedia.org



Antigens in the small intestine lumen are sampled by specialized cells of the Peyer's patches known as microfold cells (M cells). These cells transport antigens and deliver them to dendritic cells and macrophages for antigen presentation to T lymphocytes. T lymphocytes then initiate an immune response. The T cell response is regulated by various factors including the presence of commensal bacteria and the state of the gut barrier. The T cell response is also influenced by the presence of antigens in the lumen. The T cell response is also influenced by the presence of antigens in the lumen.

Microfold (M) cells are specialised epithelial cells of the Peyer's patches that sample antigens from the gut lumen, thereby enabling the host to respond immunologically. These cells take up intact antigen

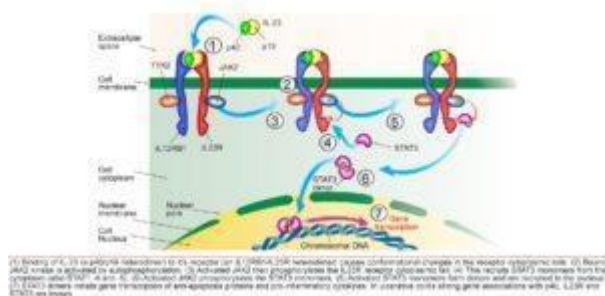
from the lumen by endocytosis and deliver it to dendritic

cells and macrophages for antigen presentation to T lymphocytes. Activated T lymphocytes differentiate into Th1, Th2, Th17 or Treg subclasses that mediate inflammatory responses. With IBD, what we know very well is that there is a skewed presence of T-cells, with more Th1 cells and pro-inflammatory cytokines present. This in turn leads to an increased presence of CD8 T-cells in the epithelial lining of the colon of UC patients, which is taken to contribute to damage of the lumen of the colon (See figure 2). UC can therefore be classified as a type 4 hypersensitivity reaction characterised by a heavy involvement of T-cells. With the increased presence of pro-inflammatory cytokines, B-cells are soon to follow and be involved too (Richards, 2019).

What gene associations occur in ulcerative colitis?

IL-23 signal transduction

immunopedia.org



Gene association studies in patients with ulcerative colitis have identified the potential involvement of p40, [IL-23R](#) and [STAT3](#) genes. These genes are involved in the signal transduction pathway of [IL-23](#).

IL-23 is a cytokine produced by macrophages and dendritic cells in immune responses to microbial pathogens. IL-23 stimulates the expansion of CD4⁺ helper T lymphocytes that have differentiated into Th17 phenotypes. Th17 T lymphocytes produce [IL17](#) and other pro-inflammatory cytokines. Stimulation of the IL-23 receptor specifically leads to the transcription of genes encoding anti-apoptotic proteins and pro-inflammatory cytokines via the activation of STAT nuclear transcription factors. It is thought that the induction of a pro-inflammatory state of the immune system in response to normal gut bacteria causes the symptoms of ulcerative colitis. A strong association of the genes encoding p40 which is a subunit of IL-23 cytokine, IL-23R which is a subunit of the IL-23 receptor and STAT3 which is a nuclear transcription

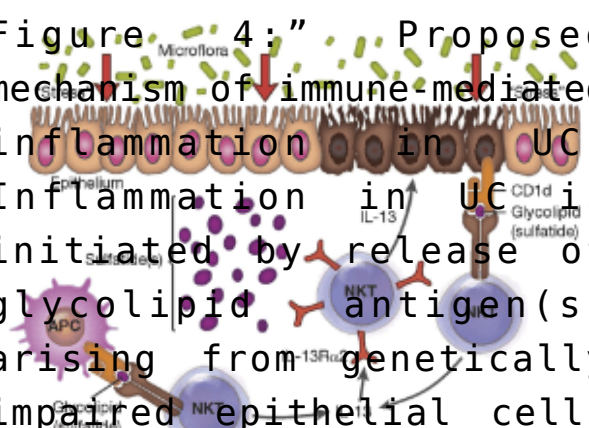
factor has been established in patients with ulcerative colitis. This suggests the involvement of Th17 helper T lymphocytes in the inflammatory response to gut bacteria in ulcerative colitis (See figure 3).

The array of genetic polymorphisms associated with UC would point to the likelihood of abnormalities in the epithelial barrier contributing to the onset of this condition, one hypothesis supporting the presence of an epithelial cell defect that initiates the disease under pressure from the colonic microbiome (figure 4) (Fuss and Strober, 2015).

Figure 4: "Proposed mechanism of immune-mediated inflammation in UC."

Inflammation in UC is initiated by release of glycolipid antigen(s) arising from genetically impaired epithelial cells under stress from exposure to components of the gut microbiome. These antigens are presented to and stimulate NK T cells in the context of CD1 on the surface of epithelial cells or on lamina propria dendritic cells. The NK T cells so stimulated cause epithelial cell damage by direct cytotoxic activity via interaction with CD1d loaded with glycolipid on the epithelial cell surface. Alternatively, the NK T cells cause epithelial

What are Peyer's patches?
Peyer's patches are aggregations of lymphoid tissue, made up of lymphoid follicles located in the lamina propria of the mucosa. In adults, B lymphocytes are seen to predominate in the follicles' germinal centers. T lymphocytes are found in the zones between follicles. With the lumen exposed to to the external environment, there are large numbers of potentially pathogenic microorganisms present. Peyer's patches therefore carry out immune surveillance containing macrophages, dendritic cells, B-lymphocytes, and T-lymphocytes. The lymphoid tissue is covered by a special epithelium that contains specialized cells called M cells which sample antigen directly from the lumen and deliver it to antigen-presenting cells. These



apoptosis by release of cells then pass to the mesenteric lymph nodes where the immune response is amplified.

Interleukin-13 also enhances inflammation by interacting with IL-13R α 2 on NK T cells,

thereby inducing further NK T cell cytotoxic activity.

Finally, epithelial ulceration resulting from

these symptoms. Mild Severe Fulminant

of bacterial components >10

the • Ulcerative Colitis • Intermittent Frequent Continuous

stimulation Temperature Normal >37.5 C

inflammation Normal >1000 cells/mm³

Source: Haefliger and Nischan (2015) • ESR 30mm/hr

How do you grade the severity of the disease?

Ulcerative Colitis disease severity (based on Truelove and Witt classification):

Download images for case



Ulcerative Colitis

1 file(s) 620.07 KB

[Download](#)

Final Outcome

Treatment and management:

On admission patient was rehydrated and given Solucortef 100 mg IMI tds. She continued to pass 10 stools the following day.

Day 3:

Patient continued to experience diarrhoea and unable to tolerate food or water.

Transfused with 2 units of packed cells

Prescribed:

Asacol 1.2g po, tds ([mesalazine](#))

Asacol suppository PR bds

[Morphine](#) 15mg IMI PRN

Flagyl 500mg tds

Day 6:

Patient has continued to experience diarrhoea of watery, bloody stools. Abdominal pain has decreased and abdomen is soft and undistended.

It was decided to continue medical management for a further 7 days, with the addition of:

[Cyclosporine](#) 80mg IVI, infused over 2hrs

Losec 20 mg po daily ([omeprazol](#))

Slow K rider IVI bds

Slow [Magnesium](#) IVI daily

Clexane 40 mg S/C daily ([enoxaparin](#))

Day 13:

It was decided that medical management had failed as no relief of symptoms was achieved. Surgical management was therefore required.

A laparoscopic total colectomy and ileostomy was performed. Three months post surgery the patient is scheduled to return for ileal-anal pouch surgery, to eliminate the need to wear a bag.

Download images for case



Ulcerative Colitis

1 file(s) 620.07 KB

[Download](#)

- Ulcerative colitis (no date) MedicineNet. Available at: https://www.medicinenet.com/ulcerative_colitis/article.htm (Accessed: November 14, 2022).
- Richards, M. (2019) Immunopathogenesis of Ulcerative Colitis. USA: Maureen Richards Immunology & Microbiology: YouTube channel. Available at: <https://www.youtube.com/watch?v=FnahtfSmP60>.
- Fuss, I. J. and Strober, W. (2015) "Ulcerative Colitis," in Mucosal Immunology. Elsevier, pp. 1573–1612.

Multiple Choice Questions

Earn 1 HPCSA or 0.25 SACNASP CPD Points
– [Online Quiz](#)

Download images for case



Ulcerative Colitis

1 file(s) 620.07 KB

[Download](#)